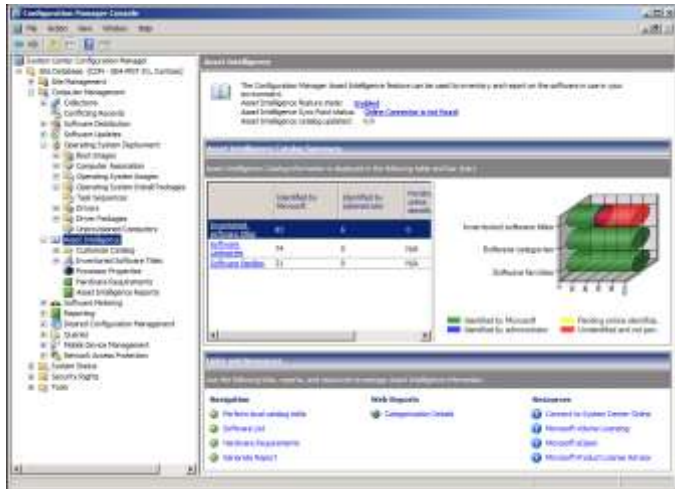




Microsoft® System Center

Automated & Centralized Deployment, Provisioning and Update of Windows Server



Deploying and maintaining the Windows Server® operating systems in datacenters and across IT environments can be a complex undertaking. Especially when considering the number of possible configurations and the sheer number of physical and virtual servers that must be managed.

Both traditional and modernized approaches to server deployment and updates are often found to not meet the feature requirements of the datacenter, or scale adequately to the number of servers that have to be managed. Add in the growing desire to virtualize many environments, and many organizations might find themselves having to implement multiple technologies from different vendors to just meet their immediate requirements.

What is required is a solution that delivers powerful automation capabilities from a central location, and one that can handle the deployment, provisioning, and update of Windows Servers in the datacenter.

Deploying, Provisioning, and Updating Windows Server with System Center

Microsoft® System Center delivers a highly flexible, automated set of capabilities that simplifies the deployment and maintenance of Windows Servers all through an integrated management system that covers the physical and virtual infrastructure.

With the ability to deploy and configure servers from any previous state, including bare metal and virtualized deployments, System Center dramatically reduces the efforts that surround server deployments and upgrades. With powerful software distribution capabilities, along with comprehensive software update management, System Center provides the most comprehensive set of capabilities in its class.

Key Benefits

With System Center, organizations will see benefits ranging across:

Cost reduction: Reduces the cost of deploying operating systems across the datacenter.

Simplified planning: Simplifies planning for upgrades with advanced knowledge and insight.

Toolset unification: Unifies the deployment toolsets for both the client and the server.

Process delivery: Delivers an end-to-end process for deployment.

Significant flexibility: Provides high degrees of flexibility to accommodate complex enterprise requirements.

Native toolsets: Uses native toolsets found in Windows.

Security improvement: Improves security throughout the entire deployment process.

Core Capabilities

System Center delivers powerful capabilities to deliver centralized deployment, provisioning and update of Windows Servers across your datacenter.

Simplified Image Management

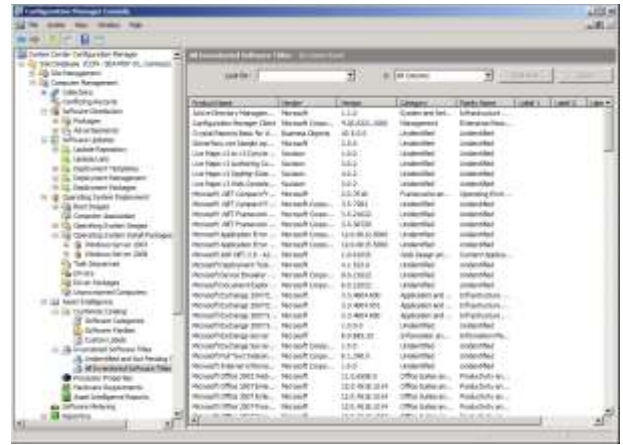
System Center enables organizations to reduce the number of system images that have to be managed in addition to providing greater flexibility when delivering the required operating system, applications, updates, patches, and security fixes to a device in a single distribution.

Windows imaging (WIM) format: Embraces the Windows Imaging (WIM) format, which is both language neutral and Hardware Abstraction Layer (HAL) independent.

Management separation: Separates the management of the core image from the management of device drivers.

Driver catalog: Provides a customizable driver catalog that enables administrators to dynamically deploy the right drivers from Microsoft and third parties at runtime during the OS deployment.

Powerful flexibility: Provides powerful flexibility in delivering the required operating system, applications, updates, patches, and security fixes to a device in a single distribution.



System Center collects and reports on the inventory of software deployed across your datacenter

Fine-control over the sequencing of deployment tasks

System Center delivers high levels of automation across any deployment scenario.

Task management: Enables administrators to add and group tasks easily, define the order that they run in, and define criteria to control if a task should be performed.

Powerful, extensive set of tasks: Provides administrators numerous setup and configuration options, including disk management, network configuration, automated domain joins, computer restarts, driver selection and deployment, and much more.

Integration with the Microsoft Deployment Toolkit (MDT): Facilitates image creation and automated installation of servers and software, improving the security and ongoing management of system configurations.

Removable media: Supports both offline and removable media.

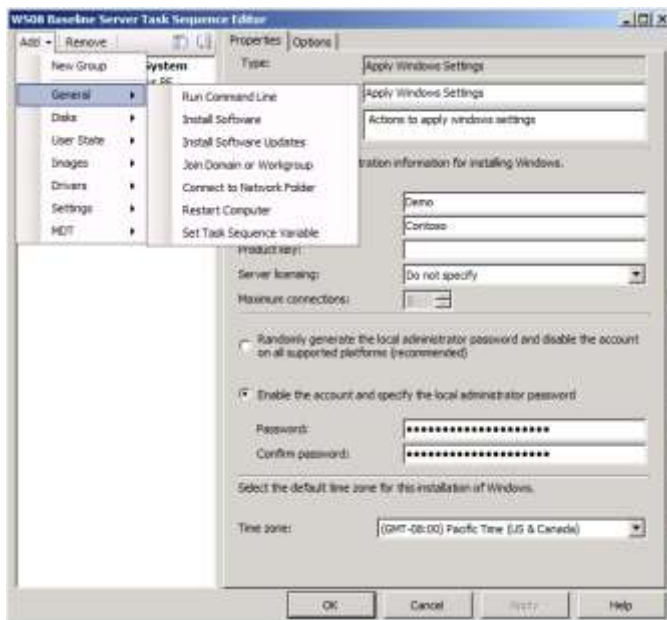
Scenario support: Provides scenario support for computer to computer, in-place migrations, OEM, and PXE.

Extensive software update capabilities

Built on Windows Server Update Services (WSUS), System Center enables the efficient delivery of updates to servers across the datacenter.

Updates: Supports the update of Microsoft products, hardware drives, and the system BIOS.

Custom software update catalogs: Provides custom software update catalogs to support the deployment and update of third party applications, and custom in-house line-of-business applications.



The System Center 'Task Sequencer' delivers precise control over the steps that are automated during server deployment, such as setting up how local disks will be partitioned, installation of local or 'virtual' applications, and the joining a machine to the Domain.

Internet Based Client Management (IBCM):

Provides Internet Based Client Management (IBCM) that enables geographically dispersed users who rarely connect to the corporate network to receive software updates securely over the Internet.

Vulnerability assessment: Provides automated vulnerability assessment that discovers any needs for patches.

Single process updates: Provides a single process for updating both physical and virtual systems.

Virtual system patch: Provides the ability to patch virtual systems that are not currently running.

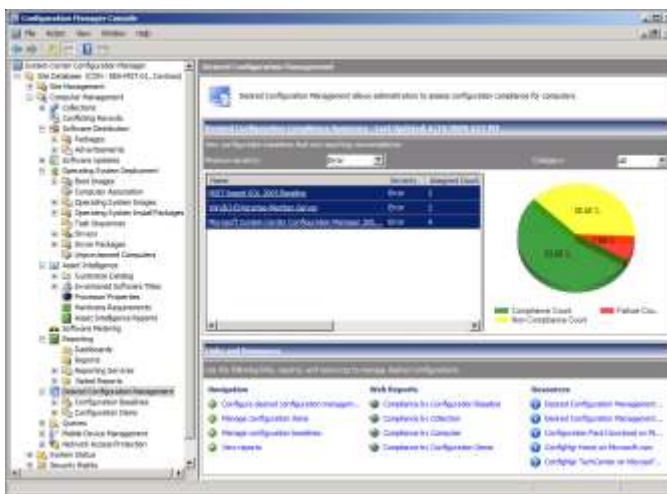
Physical and virtual application distribution

By automating software distribution, System Center helps to eliminate inefficiencies and errors that often accompany the manual installation of applications and software updates.

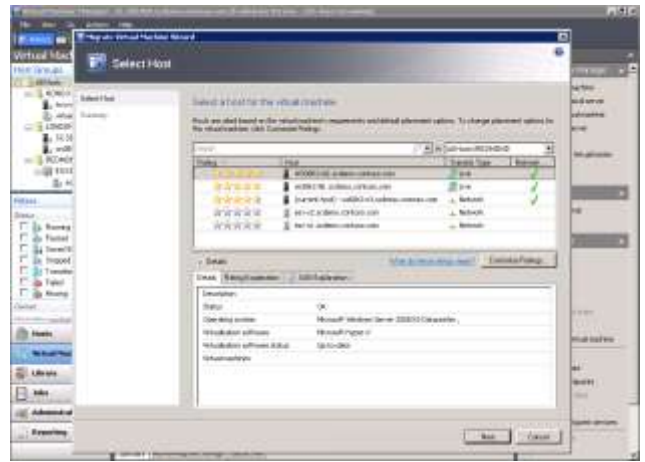
Central definition and configuration: Enables IT administrators to centrally define and configure how and when applications run on servers, eliminating the need for user intervention.

Targeting, scheduling, and reporting: Explicit targeting, scheduling, and reporting enable more effective and automated software deployments.

Offline support: Provides support for offline and low-bandwidth connectivity, improving the level of delivery success to servers in remote or distributed datacenters.



The Desired Configuration Management (DCM) capability of System Center helps identify where server configurations differ from their baseline (configuration drift), helping identify and prioritize corrective action.



System Center uses information it already gathers from across your datacenter to calculate the best virtualization host for a guest system, helping you to deploy virtual servers intelligently.

Dashboard: Dashboard provides immediate visibility into the status of compliance with software advertisements across the datacenter, or on a per-server basis.

Maintenance windows: Maintenance windows provide fine-grained control over when deployments and updates take place.

Wake-on LAN: Wake-on LAN capabilities enable scheduled distributions to take place even when targeted servers are powered off.

Rapid virtual server provisioning

System Center facilitates the rapid provisioning of new virtual servers to the appropriate hosts within the datacenter.

Library of virtual building blocks: To expedite the creation of new virtual machines, a library of virtual building blocks including virtual hard disks, CD and DVD media images, post-deployment customization scripts, hardware configurations, ISO images and more enables the rapid configuration and creation of virtual machines.

Virtual system templates: Virtual system templates provide pre-defined configurations for guest system software, networking and hardware, assuring virtual server consistency.

Intelligent placement: Intelligent placement determines the best host for a virtual server based on an assessment of factors including performance data, resource requirements, and more.

Centralized administration: Centralized administration, and support for the migration of virtual servers between host systems simplifies the management of virtual systems.

Virtual server lifecycle management

Virtual server lifecycle management automates virtualization workflows and activities for servers and their workloads. This eliminates the latency and risk associated with introducing new services.

Storage manipulation: Orchestrates storage, server, application, and management tools to build compliant servers.*

Automation: Automates the approval, cloning, configuration, deployment, and verification of virtual servers.

Backup management: Handles the backup, notification, tear down and reclamation of assets when virtual servers are no longer required.

Non-compliant server identification

Using the Desired Configuration Management (DCM) capability within System Center, organizations can quickly identify those servers that have configurations that drift from the desired state, helping administrators identify those servers that need attention.

Server assessment: Assesses servers against a set of established configurations, such as whether the correct Microsoft Windows operating system version is installed and configured appropriately.

Compliance validation: Validates compliance with software updates and security settings, helping reduce problems from servers deviating from their expected configurations (configuration drift).

Configuration pack leverage: Leverages pre-built configuration packs from Microsoft that detail best configuration practices for different systems and workloads.

Customized configuration packs: Administrators can customize configuration packs or create their own to suite their requirements.

DCM dashboard: DCM dashboard helps administrators identify required and prohibited configurations and report compliance against desired configuration definitions.

Non compliant server remediation: Non-compliant servers can be quickly remediated by deploying software, scripts, updates, or task sequences against them.

System Center Datacenter Management Solutions

System Center Datacenter Management Solutions address greater interoperability, openness, and choice while improving overall operational efficiency. The key capabilities include:

Datacenter service health and performance:

Monitors and validates the health and performance of not only IT services as a whole, but the health and performance of the different components that comprise those services.

Server consolidation through virtualization:

Intelligently consolidates servers, assuring the optimal allocation of virtualized guests to available server hosts.

Compliance and Windows Server security assurance:

Centralizes configuration and security event monitoring which assists to satisfy compliance requirements.

Datacenter business continuity with virtualization delivery:

Aligns virtualization with backup and restore to assure the fastest possible restoration of IT services from unplanned outages.

Automated and centralized deployment, provisioning and Windows Server update:

Simplifies the deployment and maintenance of all physical and virtual Windows Servers through an integrated management system.

For more information, visit

<http://www.microsoft.com/systemcenter/en/us/dyna/mic-data-centers.aspx>

* Functionality not provided directly through System Center, but through solutions from partners who extend the System Center platform.